



Rake Head Barn
TRIANGLE



Rake Head Barn

TRIANGLE



First brought to life twenty-five years ago by its current owners, Rake Head Barn is a fine stone-built home that carries with it the craftsmanship and care of a truly bespoke conversion. Offered to market now for the first time, it represents a rare opportunity to own a home that feels as timeless as the land it rests on - and every bit as welcoming.



A Warm Introduction...

Set back from the world on a long, hedge-lined private drive, the home sits within its own four and a half acres of land - a mix of gardens and paddock - and is further surrounded by miles of open countryside, giving a true sense of peace and seclusion. It is a place to slow down; to reconnect and to appreciate both the peace of the present and the integrity of the past.

Step through the solid mahogany door into the welcoming hallway, where a flagstone floor of Yorkshire stone sets the tone. Light filters down from the open galleried landing above, drawing the eye to the handcrafted oak staircase, built by the owner with evident pride. Oak doors, overhead beams and honest materials speak to the barn's rural roots and its enduring strength of character.





“This is the room everyone gravitates towards - it’s where the fire’s lit, the kettle’s on and you can just sit, eat and talk.”



A Kitchen Full Of Soul...

In the heart of the home, the kitchen blends the rustic and the refined. Timber cabinetry is hand-painted in cream and topped with dark grey Corian worktops, while two separate Belfast sinks and a central island add both practicality and presence. A Rangemaster oven stands ready for Sunday roasts, complemented by an integrated Rangemaster dishwasher tucked seamlessly within the cabinetry. There’s space for a farmhouse table - the kind around which long conversations and slow breakfasts unfold. A log burner in the corner brings warmth and heart to the room.



Dining With A View...

From the kitchen, an oak door leads through to the dining room - once the centre of the original barn. A glazed door and large picture window fill the space with light and frame views of the paddock just beyond. A second window adds further brightness, and an oak floor underfoot grounds the space in quiet elegance. Beams overhead remind you of the building's past life, now lovingly repurposed.





“We always end the day in here. Whether it’s winter with the fire going or summer when the windows are open, it’s just a lovely place to be.”



A Space To Gather...

Double half-glazed oak doors lead to the living room, where space, light and comfort come together beautifully. With windows on two sides capturing far-reaching countryside views, a log burner for colder evenings and exposed beams that echo the home’s origins, it’s a room equally suited to relaxing in solitude or gathering with company.

Off the hallway, you’ll find a WC with tiled floor, wash hand basin and WC – simple, stylish and functional. The utility room is generously proportioned, with its own tiled floor, fitted units, sink and space for a washing machine and separate tumble dryer. After a day spent out on the land, there’s even a sauna and shower here - a luxurious touch designed with country life in mind.



A Home With
Heart & Heritage...

“Waking up here with the window open and the view of the garden and rolling countryside beyond is something I’ll always miss. It’s so peaceful.”



Spaces To Rest...

Climbing the oak staircase leads you to the home's first floor, where four bedrooms and a beautifully crafted bathroom await.

The principal bedroom is a generous double with soft carpet underfoot and windows framing far-reaching views across the garden and countryside beyond. There's space here for more than just sleeping - it's a room that invites you to pause, with room for a reading chair, a writing desk or simply somewhere to enjoy the morning light. Peaceful and private, it feels like a retreat within the home - a place to start and end the day with calm.





Rest & Refresh...

The bathroom is a triumph of handcrafted detail – from the oak floor and mahogany half-panelling to the bespoke corning, all created by the owner. There's a bath, separate shower, WC, bidet and twin wash hand basins, with gold plated fittings and an antique-style column radiator completing the picture.

A second double bedroom enjoys an elegant arched window - a clever repurposing of the barn's original entrance. Bedrooms three and four both feature oak flooring, in-built eaves storage, Velux windows and additional outlooks across the paddock or garden.

“We’ve had parties, games nights, and sometimes it’s just been a quiet place to read. It really could be anything.”



Room To Dream...

Upstairs again to the second floor, and you’ll find a remarkably versatile space – currently used as a games room, but easily reimagined as a magnificent principal suite. An adjoining office, already in place, could become a luxurious en suite, turning this floor into a true retreat.





“It’s the peace that people always comment on – the sense of privacy and stillness is something we never take for granted.”



Gardens To Grow Into...

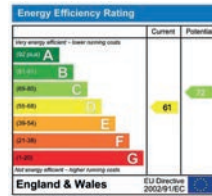
Outside, Rake Head Barn is no less special. Set in around four and a half acres, with approximately three and a half acres given over to paddock – ideal for equestrian or smallholding use – the land offers both space and freedom. Two timber stables are currently used as a workshop and a shed, while landscaped gardens offer mature planting, quiet corners and a summerhouse for afternoon tea or evening drinks.

A large south-facing decking area offers a spectacular vantage point for taking in the far-reaching views, watching the seasons shift and the light move across the land.



Rake Head Barn

TRIANGLE



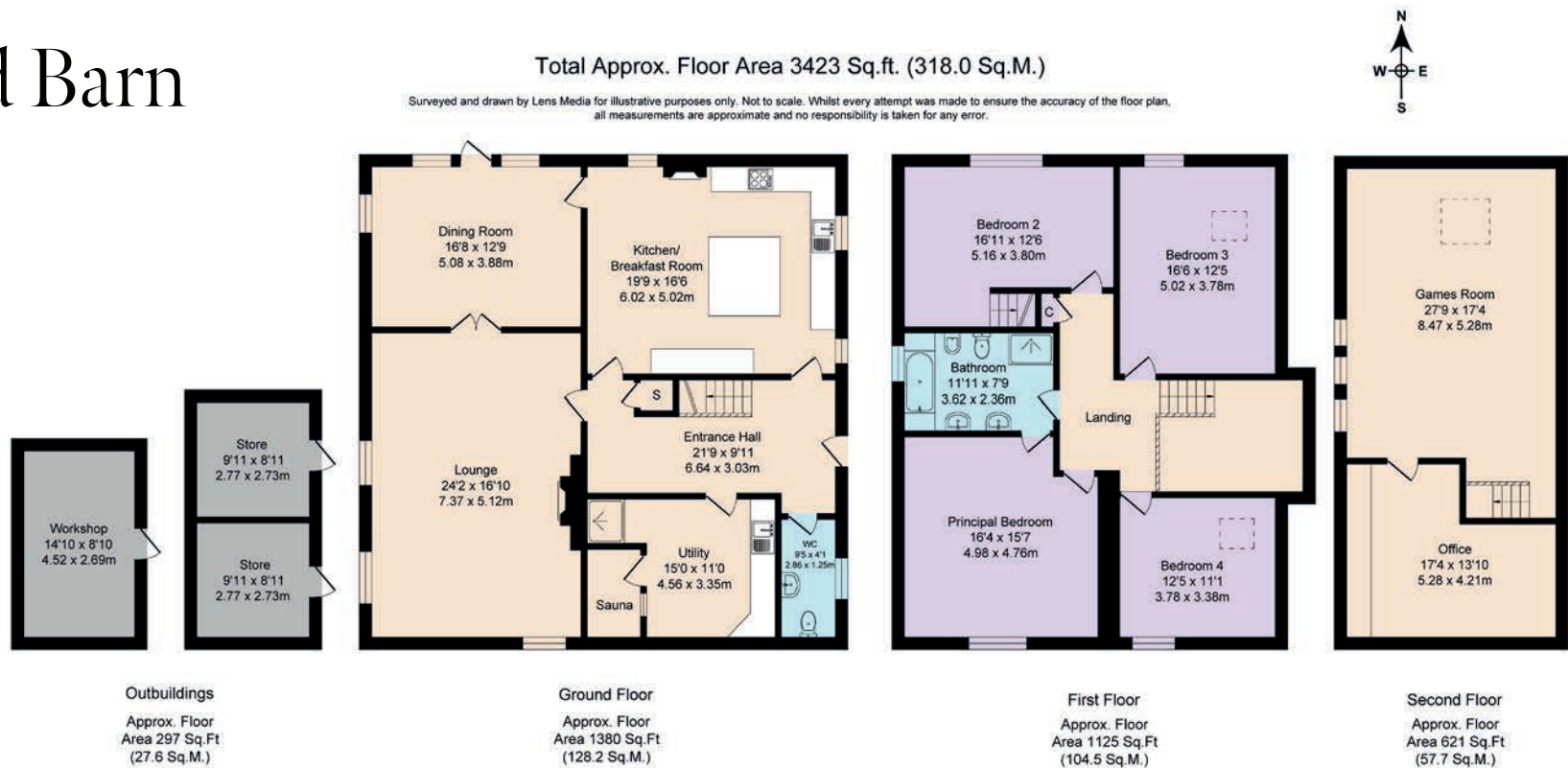
FINER DETAILS

- Barn Conversion
 - 4 Bedrooms
 - 3 Reception rooms
 - 2 Bathrooms
 - Games room
- Bespoke handmade kitchen
 - Sauna
 - 4 1/2 acres of garden & land
 - Water - Bore Hole, Drainage - Septic Tank, Oil Heating & water

Practical Considerations...

Rake Head Barn is served by its own water bore hole, with oil-fired central heating, mains electricity and private drainage via a septic tank – all in keeping with the self-sufficient spirit of the setting.

This is a home shaped by hand, grounded in landscape and ready to offer the same sense of peace, privacy and permanence to its next owners.



ASK THE OWNERS SECTION

WHERE DO YOU GO WHEN YOU NEED...



MILK:
Ripponden Co-op -
10 min drive



CHEMIST:
Ripponden -
10 min drive



WALK:
Many stunning and scenic walks
in the area on our doorstep



GYM:
Sowerby Bridge -
10 min drive



PLACES TO EAT:
The Alma Inn - 5 min drive/25 min walk,
The Fleece Countryside Inn - 13 min drive
The Old Bridge Inn - 10 min drive



PUB:
The Alma Inn - 5 min drive/25 min walk
The Beehive Pub & Dining - 8 min drive



TAKEAWAY:
Many takeaways with a broad spectrum
of cuisines in Sowerby Bridge and
Ripponden which deliver.



POI:
Hebden Bridge - A charming Yorkshire market town
known for its independent shops and vibrant arts
scene. Halifax - Home to the Piece Hall and Eureka!
The National Children's Museum.



LOCAL SCHOOLS:
St. Mary's CofE Primary School - 7 min drive. Rishworth Private
School - 12 min drive. Ryburn Valley High School - 8 min drive



PUBLIC TRANSPORT:
Local bus to Halifax bus station - 20 min walk
More bus and transport options from Ripponden town
- 10 min drive



Rake Head Barn

TRIANGLE

Rake Head Barn, Triangle HX6 3EZ

presented by



WHAT3WORDS: [pies.viewer.tables](#)

To view Rake Head Barn
Call: 01423 225121
WhatsApp: 07398 748511
Email: hello@mrandsmrchild.com