



Reynard Crag

HARROGATE

Reynard Crag

HARROGATE

NIDDERDALE TRANQUILITY...

Built around 1880, Reynard Crag is a traditional stone-built link-detached farmhouse, quietly settled within an Area of Outstanding Natural Beauty. With approximately 2.5 acres of land unfolding across the Nidderdale landscape, the views are uninterrupted, timeless and ever-changing. This is a home shaped by light, land and the rhythm of the seasons - a place to grow, to slow and to reconnect with what matters most. Whether nurturing a garden, keeping hens or simply sitting still beneath wide skies, Reynard Crag offers a life not just lived, but deeply felt.

Tucked away at the end of a quiet lane, this peaceful property welcomes you with understated grace. There's hardstanding for two vehicles and a single garage that discreetly houses a biomass boiler - a thoughtful nod to the home's eco-conscious foundations. Traditional stone walls frame a cottage-style garden that softens the edges of the home with blooms and greenery, where heritage planting and informal charm create a space that feels both intimate and timeless.





A HEART WARMING ENTRANCE...

Step inside through the entrance boot room - a space that effortlessly balances function with charm. Here, muddy boots are kicked off, damp coats find their hook and the day's pace begins to slow. From its windows, uninterrupted views sweep across the Nidderdale landscape, drawing the eye to rolling hills and endless sky. It's a quietly uplifting room - one that grounds you in the landscape even before the day has begun. Versatile by nature, it also lends itself beautifully as a study or reading space, where moments of stillness are matched by ever-changing scenes beyond the glass.



*"We spend most of our
time in the dining hall,
cosy in front of the log
burner, watching the birds
in the gardens."*



VERSATILE SPACES...

From here, a warm and characterful dining hall beckons. With a log-burning stove nestled into the hearth and soft natural tones throughout, it offers space for a large dining table - perfect for entertaining - as well as armchairs gathered around the fire. It's a place where the pace of life slows and the simple moments shine.





THE SOUL OF THE HOME...

The kitchen, designed and recently installed by Knaresborough Kitchens, is a carefully considered space where style meets function. Light grey cabinetry pairs beautifully with pale quartz worktops, creating a calm, contemporary feel that still respects the character of the home. A double oven and induction hob offer everything you need for family cooking or weekend entertaining, while the generous layout easily accommodates a family table. Sunlight filters in as conversations unfold over breakfast or supper - a space where the beauty of the everyday is always close at hand. Adjoining the kitchen is a useful utility room with side access, perfect for stashing coats, boots and baskets of freshly picked produce.





SPACE THAT ADAPTS...

Off the hallway lies the main sitting room - a beautifully extended space, light-filled and versatile, with Velux windows above and French doors that open out onto the garden. A log-burning stove forms the heart of the room, offering warmth and welcome through the colder months. Whether used for entertaining, working or as a ground-floor bedroom, the room flexes gently to suit each chapter of life. A fully tiled shower room sits just across the hall, offering convenience and further possibilities for multi-generational living.







UPSTAIRS A QUIET RETREAT...

The first floor offers four double bedrooms, each one a serene sanctuary. The largest bedroom is bathed in light, with dual aspect windows framing wide views over Nidderdale - a truly restful space.





ROOMS WITH A VIEW...

Two further bedrooms are positioned to the front of the house, enjoying views over the cottage-style garden and the paddocks beyond. The final bedroom, with a southerly aspect, currently serves as a study but offers generous proportions and would make an excellent fourth double room. Whether bathed in morning light or wrapped in the stillness of evening, each space has its own sense of calm and comfort.

The house bathroom features a bath with hand shower, WC, wash basin and tongue and groove panelling that brings a soft, classic charm to the space. A large airing cupboard adds welcome practicality, completing a room that blends utility with quiet comfort.



*“The light, the views, the stillness -
every room just feels calm.”*





A GARDEN THAT GROWS...

The cottage garden blooms into life - a gentle continuation of the home's story. Stone paths lead through scented planting, climbing roses and quiet corners perfect for reading or reflection. Long-distance views across Nidderdale stretch out beyond the fence line, reminding you that, here, nature is both backdrop and presence.

"I love to sit with a coffee in the garden and watch the birds on lazy weekend mornings."





LIVING LIGHTLY ON THE LAND...

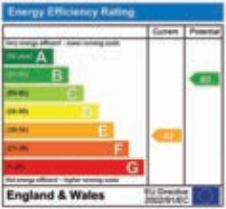
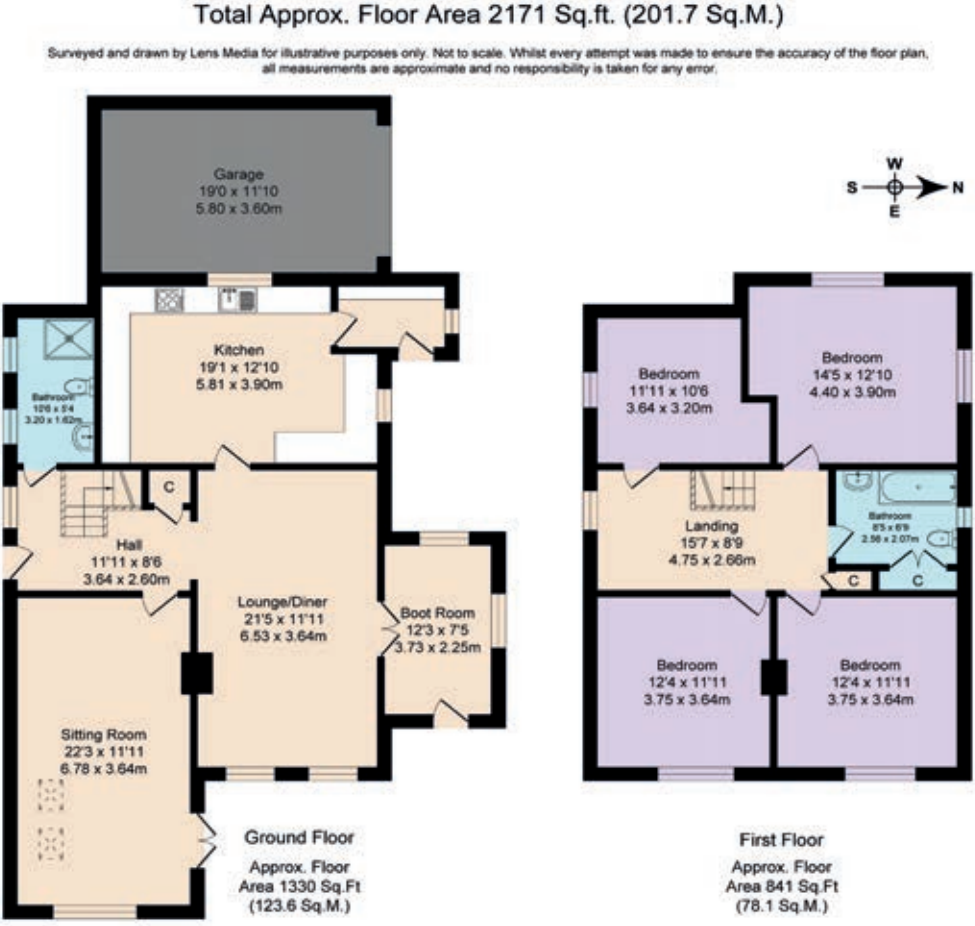
Beyond the cottage garden, the land extends to approximately 2.5 acres - a space ripe with opportunity and alive with possibility. Mains water is supplied to both the upper and lower areas, making it practical as well as picturesque. Whether you're dreaming of vegetable beds, orchard trees or pasture for small livestock, the land invites your vision to take shape.

This is a home for those who believe in living with the seasons. Grow your own produce, raise chickens, keep bees or create a wildlife haven. The space lends itself beautifully to those who cherish self-sufficiency, biodiversity and a deeper connection to the earth. For nature lovers, the daily pleasures of birdwatching, tracking seasonal changes and tending the land are as rewarding as they are grounding.



*"The land gave us more
than food - it gave us
peace. It slowed everything
down and made life
fuller somehow."*





FINER DETAILS

- Victorian stone-built link detached cottage
- 4 bedrooms
- 2 bathrooms (including 1 downstairs)
- 2 reception rooms with log burners
- Recently modernised kitchen
- 2.5 acres of land perfect for small holding use
- Off-street parking & garage
- Stunning views over Nidderdale AONB
- Just 5 miles from Harrogate
- Services: mains water & electricity; septic tank; biomass boiler
- No onward chain

ASK THE OWNERS SECTION

WHERE DO YOU GO WHEN YOU NEED...



MILK:
Award-winning Dale
Stores in Birstwith
Village



WALK:
The Nidderdale Way - it
passes along the lane



GYM:
There's a variety in
Harrogate
(5 miles)



PLACES TO EAT:
Station Hotel, Birstwith Village
(friendly bar area, lovely menu,
indoor/outdoor seating)



PUB:
Station Hotel in the village
or The Joiners Arms in
Hampsthwaite (great Sunday
carvery, 3 miles away)



TAKEAWAYS:
Variety in Killinghall/Harrogate that
deliver: Cardamon Black offers
spectacular Indian food



POI:
Ripley Castle, Harrogate spa town,
Ripon Cathedral, Fountains Abbey
(World Heritage Site), Brimham
Rocks, The Yorkshire Dales, local
countryside and market towns



PUBLIC TRANSPORT:
Bus service through the village
to Pateley Bridge and Harrogate



LOCAL SCHOOLS:
State: Birstwith Primary School
(Good); within catchment of
Harrogate Grammar School
(Outstanding). Independent: Belmont
Grosvenor School; Ashville College

Reynard Crag

HARROGATE

Reynard Crag, Reynard Crag Lane, High Birstwith, Harrogate, HG3 2JQ

presented by



WHAT3WORDS: [score.arrival.drifters](https://www.what3words.com/score.arrival.drifters)

To view Reynard Crag
Call: 01423 225121
WhatsApp: 07398 748511
Email: hello@mrchild.com